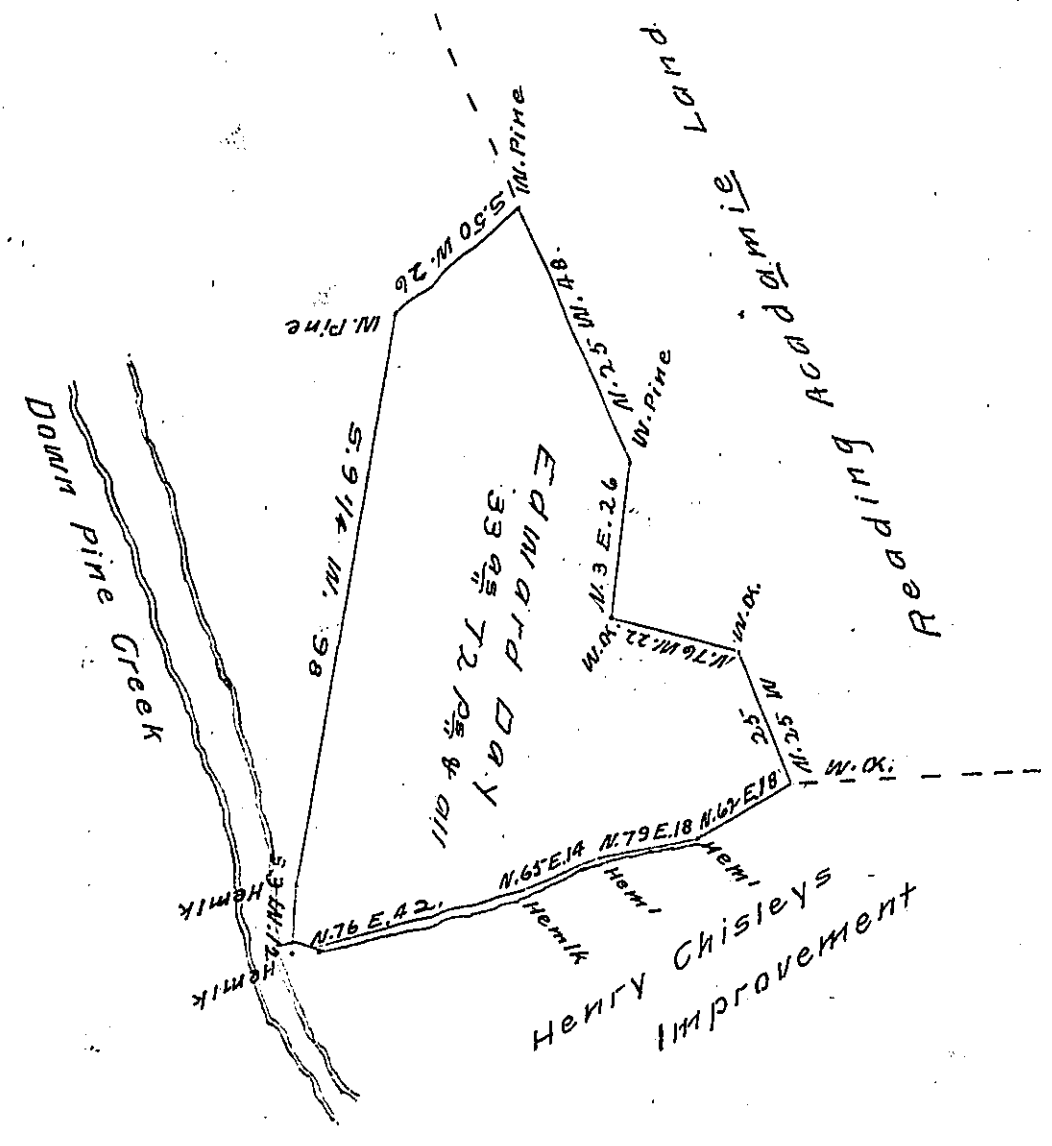


FORM No. 1.



Surveyed the above discribed Tract of land on the 22^d of January 1830 for Edward Day in persuance of his warrant dated December the 28th 1829, Situate in Brown Township Lycoming County adjoining and on the East side of Pine Creek about Fourteen Miles from the River bounded as above containing Thirty three acres and seventy two perches and allowance of six pr cent for Roads &c

J. A. Gamble D.S.

To Jacob Spangler Esqr }
 Surveyor General }

IN TESTIMONY that the above is a copy of the original remaining on file in the Department of Internal Affairs of Pennsylvania, made conformably to an Act of Assembly approved the 16th day of February 1833, I have hereunto set my hand and caused the Seal of said Department to be affixed at Harrisburg, this 6th day of December 1907

Henry Howell
 Secretary of Internal Affairs.